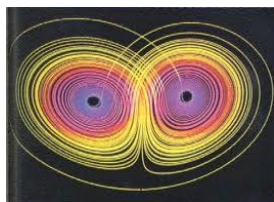


GEORGIA STATE UNIVERSITY

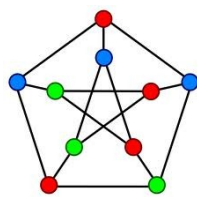
GRADUATE PROGRAMS IN MATHEMATICS AND STATISTICS

Programs: The Department of Mathematics and Statistics offers **PhD** with concentrations in Mathematics, Bioinformatics, and Biostatistics, and **MS** with no concentration or concentrations in Bioinformatics, Biostatistics, Discrete Mathematics, Scientific Computing, Statistics, as well as Statistics and Allied Field. The department has a diverse faculty body conducting research in areas including algebraic geometry, applied and computational mathematics, bioinformatics, biostatistics, biomathematics, combinatorial matrix theory, combinatorics and graph theory, commutative algebra, dynamical systems, collegiate mathematics education, inverse problems, and scientific computations. These concentrations are programs designed for persons who wish to prepare for careers as professional mathematicians or statisticians in industry, business, education, academia or government. These programs provide advanced training in applied mathematics, pure mathematics or statistics for those who are presently working in areas that use mathematics or statistics, as well as for those who plan to enter these areas. The programs present an optimal balance among the broad range of mathematical methods, statistical techniques, and computational skills. Our graduates have been well placed in both academic and industrial positions (e.g. see [here](#)).

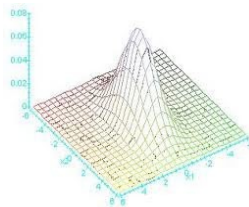
Financial Support: Graduate Research Assistantship (GRA), Graduate Lab Assistantship (GLA), and Graduate Teaching Assistantship (GTA) are available for both MS and PhD students. **More than 90% of PhD students and more than 50% of the first year MS students have financial support; the department also offers assistantships to all second year MS students, including tuition waiver, if they qualify.** Other financial support opportunities may be available through faculty members' individual grants, or from Georgia State University Fellowships and Research Initiatives, or by working in the Mathematics Assistance Complex. All these assistantship recipients are automatically eligible for tuition waiver.



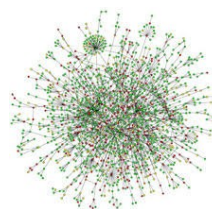
Dynamical Systems



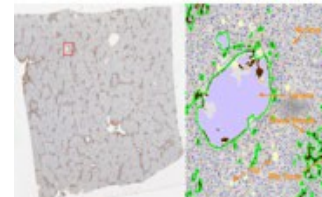
Graph Theory



Advanced Statistical Research



Bioinformatics and Biomedical Analytics



Application Deadline:

Spring	November 15
Summer	May 1
Fall	July 1

Financial Assistantship Deadline

Spring	October 15
Summer	February 15
Fall	February 15

The University: Georgia State University is the Southeast's leading urban research institution. Georgia State has over 1600 dedicated faculty members who work closely to support over 7000 graduate students as they launch the next phase of their careers. With a diverse campus located in the heart of downtown Atlanta, we offer internships and career-building opportunities,

scholarly resources, great food, fantastic sights, friendly faces from around the world, and a welcoming city with more than a dozen Fortune 500 Companies, countless consulates and major nonprofits. We are the No. 2 most innovative university in the nation, according to US News and World Report. In addition to fantastic scholarships and assistantships, we also offer flexible formats and schedules to fit the busiest of lifestyles.

Contacts:

Dr. Zhongshan Li, Graduate Director of Mathematics

E-mail: zli@gsu.edu

Dr. Gengsheng Qin, Graduate Director of Statistics

Email: gqin@gsu.edu

URL: <http://www.mathstat.gsu.edu>

<http://mathstat.gsu.edu/graduate/>

Ms. Katina Akins, Graduate Coordinator

Email: kakins@gsu.edu

Address: Department of Mathematics & Statistics
25 Park Place, 14th floor; Atlanta, Georgia 30303-3083

Mathematics and Statistics Graduate Faculty:

Marina Arav – PhD in Mathematics, Technion, Israel, 2000; Matrix Analysis, Linear Algebra

Mark P. Becker (GSU President) – PhD in Statistics, Pennsylvania State University, 1985; Biostatistics

Igor Belykh – PhD in Mathematics, University of Nizhny Novgorod, Russia, 2000; Dynamical Systems and Computational Neuroscience

Vladimir Bondarenko – PhD in Physics, Moscow State University, 1990; Neuronal and Cardiac Cell Models and Neural Networks

Guantao Chen (Dept. Chair) – PhD in Mathematics, University of Memphis, 1991; Graph Theory and Bioinformatics

Florian Enescu – PhD in Mathematics, University of Michigan, Ann Arbor, 2001; Commutative Algebra, Algebraic Geometry

Yi Jiang – PhD in Physics, University of Notre Dame, 1998; Bioinformatics and Biophysics

Jun Kong – PhD in Electrical and Computer Engineering, Ohio State University, 2008; Bioinformatics, Image Analysis

Zhongshan (Jason) Li – PhD in Mathematics, North Carolina State University, 1990; Combinatorial Matrix Theory, Graph Theory

Ruiyan Luo – PhD in Statistics, University of Wisconsin-Madison, 2007; Biostatistics; Primary affiliation: Institute of Public Health

Valerie A. Miller – PhD in Mathematics, University of South Carolina, 1985; Numerical Analysis, Mathematical Visualization

Yaroslav Molkov – PhD in Physics and Mathematics, Russian Academy of Sciences, 2009; Theoretical and Computational Neuroscience

Mariana Montiel – PhD in Mathematics, University of New Hampshire, 2005; Mathematical Music Theory

Liang Peng – PhD in Statistics, Erasmus University Rotterdam, 1998; Extreme Value Theory in Finance, Nonparametric Statistics, Risk Management; Primary affiliation: Robinson College of Business

Gengsheng (Jeff) Qin – PhD in Statistics, Hong Kong University of Science and Technology, 1999; Statistical Methods in Diagnostic Medicine

Andrey Shilnikov – PhD in Mathematics, University of Nizhny Novgorod, Russia, 1990; Dynamical Systems and Computational Neuroscience; Primary affiliation: Neuroscience Institute

Alexandra Smirnova – PhD in Mathematics, Kansas State University, 2000; Applied Inverse Problems: Theoretical and Computational Aspects

Michael Stewart – PhD in Electrical Engineering, University of Illinois – Urbana, 1996; Matrix Theory and Numerical Analysis

Hendricus van der Holst – PhD in Mathematics, University of Amsterdam, 1996; Bioinformatics and Combinatorial Optimization

Draga Vidakovic – PhD in Mathematical Education, Purdue University, 1993; Collegiate Math Education, Technology in Teaching

Yongwei Yao – PhD in Mathematics, University of Kansas, 2002; Commutative Algebra

Xiaojing Ye – PhD in Mathematics, University of Florida 2011; Applied and Computational Mathematics

Jing Zhang - PhD in Statistics, Harvard University, USA, 2009; Statistics and Bioinformatics

Yi Zhao – PhD in Mathematics, Rutgers University, 2001; Combinatorics and Graph Theory

Yichuan Zhao – PhD in Statistics, Florida State University, 2002; Nonparametric Statistics, Survival Analysis, Monte Carlo Methods

Georgia State University does not discriminate on the basis of race, color, religion, national origin, sex, age, disability or veteran status.